



Tailgate Topic Review

[PP 09/15/2019 - 09/28/2019]

Confined Space Entry Procedures

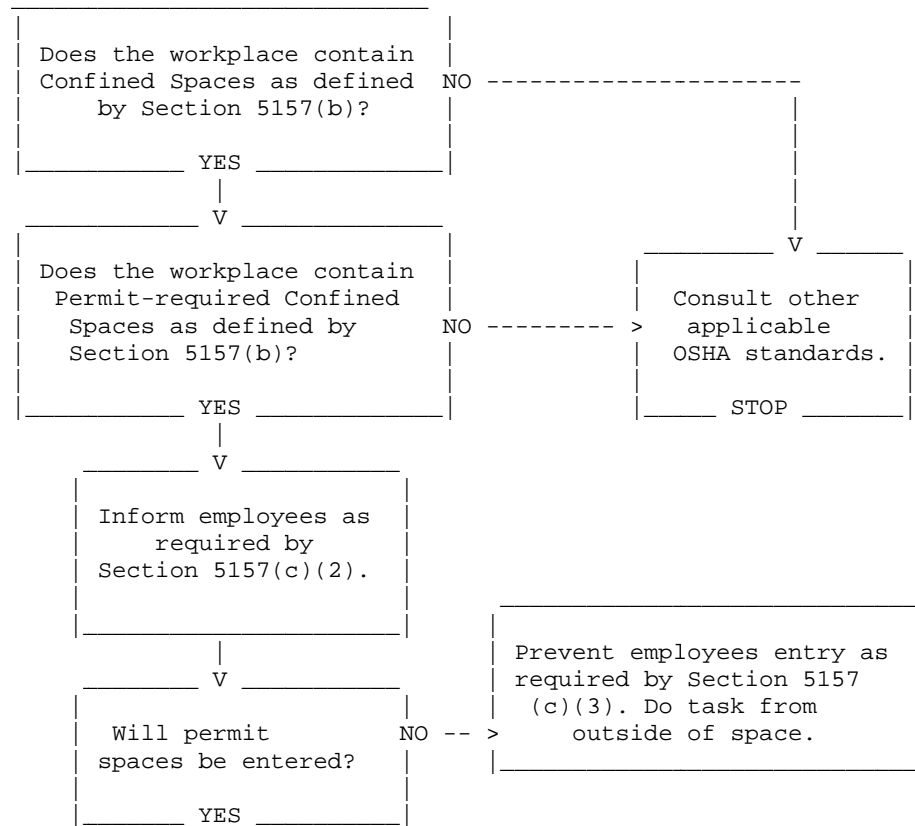
The most serious mistakes concerning confined space

1. Untrained personnel
2. Not recognizing that a space is dangerous
3. No PPE – gas detectors
4. No PPE – respirators
5. No PPE – retrieval equipment
6. Failure to properly test a space prior to entry
7. Entering a space without other trained personnel present
8. Didn't use the blower to exchange air
9. Didn't hold brief safety meeting to discuss the operation and if things go bad
10. Didn't notify plant manager
11. Poor health of entrants
12. Failure to properly classify the space



Tailgate Topic Review

§5157. Permit-Required Confined Spaces, Appendix A - Permit-Required Confined Space Decision Flow Chart



Confined space means a space that:

- (1) Is large enough and so configured that an employee can bodily enter and perform assigned work; and
- (2) Has limited or restricted means for entry or exit (for example, tanks, vessels, silos, storage bins, hoppers, vaults, and pits are spaces that may have limited means of entry.); and
- (3) Is not designed for continuous employee occupancy.

Permit-required confined space (permit space) means a confined space that has one or more of the following characteristics:

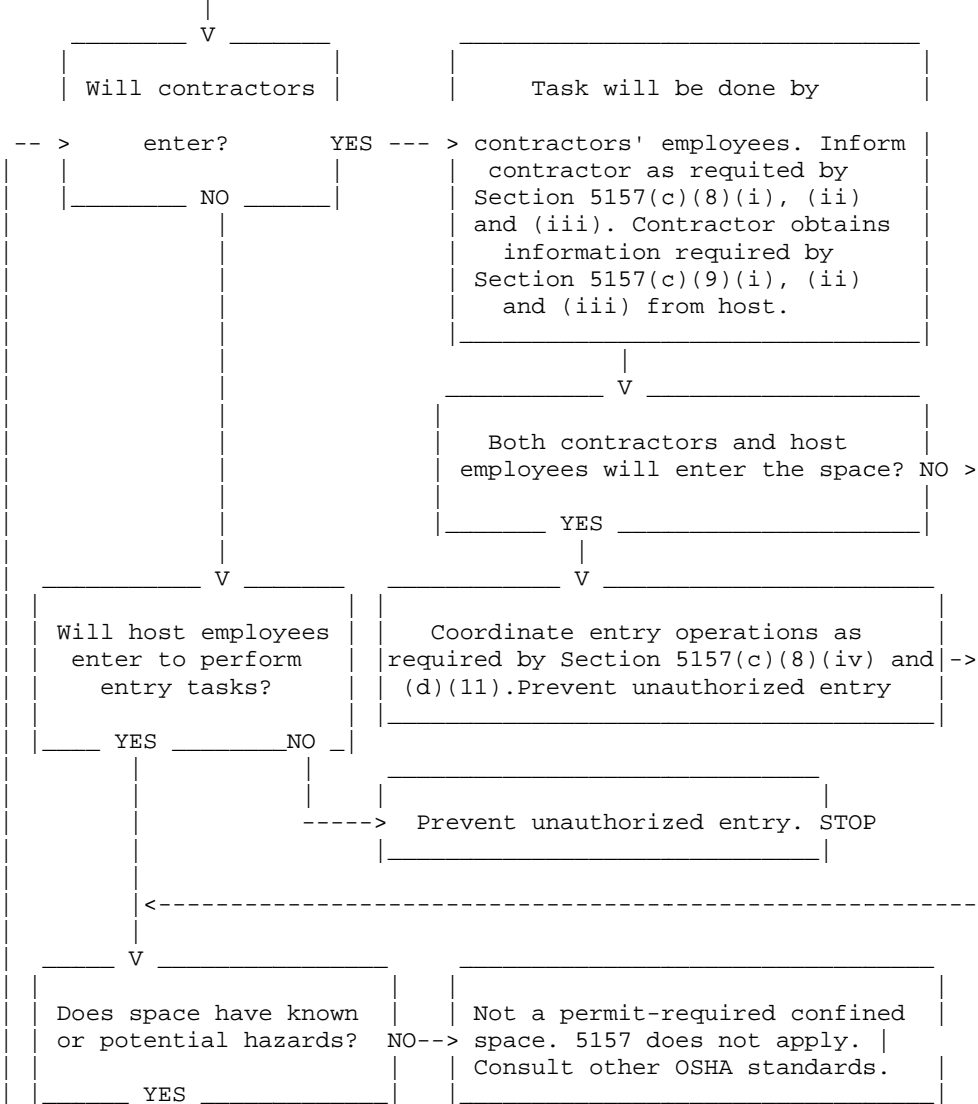
- (1) Contains or has a potential to contain a hazardous atmosphere;
- (2) Contains a material that has the potential for engulfing an entrant;
- (3) Has an internal configuration such that an entrant could be trapped or asphyxiated by inwardly converging walls or by a floor which slopes downward and tapers to a smaller cross-section; or
- (4) Contains any other recognized serious safety or health hazard.

5157 (c)(2) If the workplace contains permit spaces, the employer shall inform exposed employees and other employees performing work in the area, by posting danger signs or by any other equally effective means, of the existence, location of and the danger posed by the permit spaces.

5157 (c)(3) If the employer decides that its employees and other employees performing work in the area will not enter permit spaces, the employer shall take effective measures to prevent all such employees from entering the permit spaces and shall comply with subsections (c)(1), (c)(2), (c)(6), and (c)(8).



Tailgate Topic Review



CONFINED SPACE

ALL THREE of the following criteria must be present:

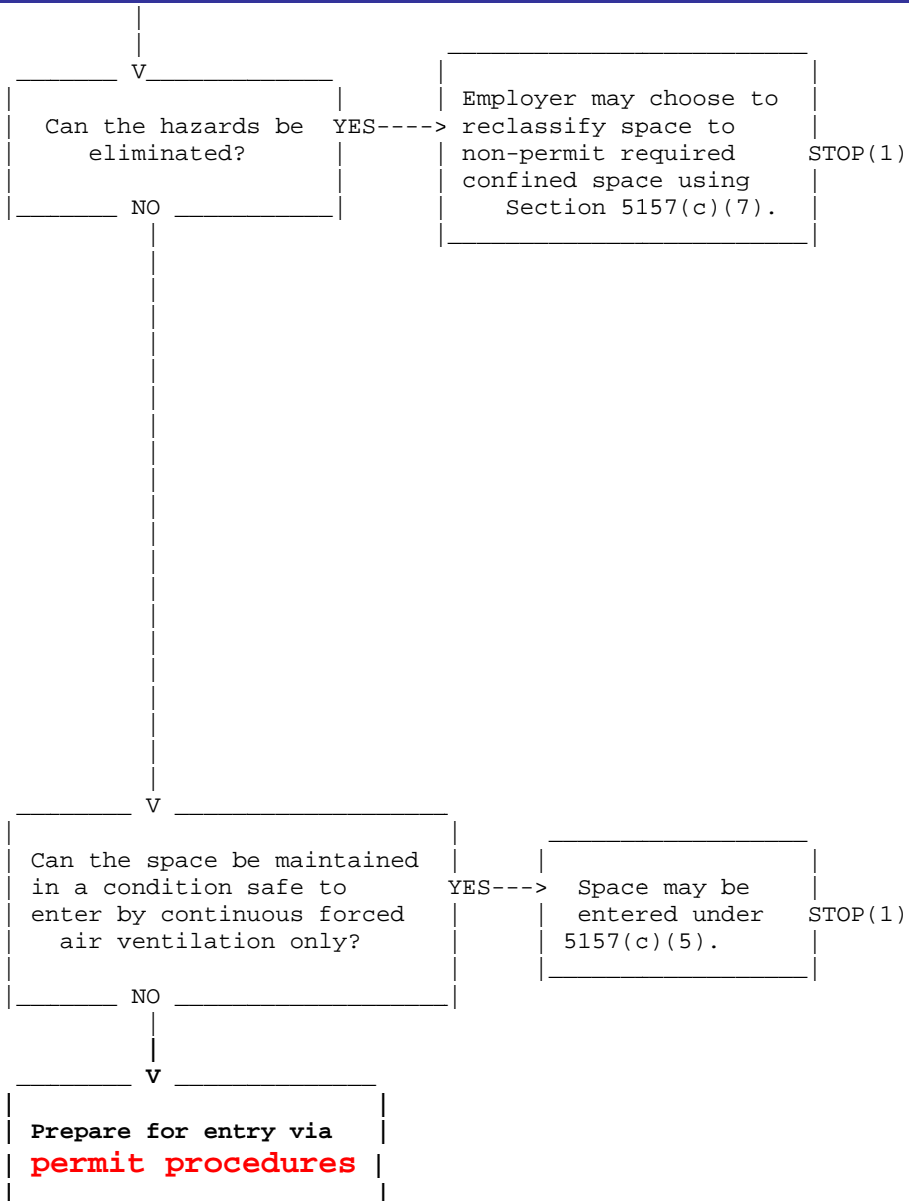
- 1) **Large enough to enter and perform work**
Space large enough to completely enter. Entry occurs when any body part breaks the plane.
- 2) **Not designed for continuous occupancy**
Space unsuitable for occupancy under normal operating conditions without safety and health considerations.
- 3) **Limited access and egress**
Entry and exit difficult, hinders ability to escape.

Refer to 5157 Definition (Permit-Required Confined Space:

- (1) Contains or has a **potential** to contain a hazardous atmosphere;
- (2) Contains a material that has the **potential** for engulfing an entrant;
- (3) Has an internal **configuration** such that an entrant could be trapped or asphyxiated by inwardly converging walls or by a floor which slopes downward and tapers to a smaller cross-section; or
- (4) Contains any other recognized **serious safety or health hazard**.



Tailgate Topic Review



5157(c)(7) A space classified by the employer as a permit-required confined space may be reclassified as a non-permit confined space under the following procedures:

- (A) If the permit space poses no actual or potential atmospheric hazards and if all hazards within the space are eliminated without entry into the space, the permit space may be reclassified as a non-permit confined space for as long as the non-atmospheric hazards remain eliminated.
- (B) If it is necessary to enter the permit space to eliminate hazards, such entry shall be performed under subsections (d) through (k). If testing and inspection during that entry demonstrate that the hazards within the permit space have been eliminated, the permit space may be reclassified as a non-permit confined space for as long as the hazards remain eliminated.
- (C) The employer shall document the basis for determining that all hazards in a permit space have been eliminated through a certification that contains the date, the location of the space, and the signature of the person making the determination. The certification shall be made available to each employee entering the space or to that employee's authorized representative.
- (D) If hazards arise within a permit space that has been declassified to a non-permit space under subsection (c)(7), each employee in the space shall exit the space. The employer shall then reevaluate the space and determine whether it must be reclassified as a permit space, in accordance with other applicable provisions of this section.

BCA Policy requires that if an inspector enters a NPRCS that they shall follow the attached policy,

1. have properly signed entry authorization,
2. Contractor has a completed form that states that the space as been re-classified per 5157(c)(7) or 5157(c)(5).
3. And never enters a space without having at least one other trained person present



Tailgate Topic Review

5157 (c) (5) An employer may use the alternate procedures specified in subsection (c)(5)(B) for entering a permit space under the conditions set forth in subsection (c)(5)(A).

- (A) An employer whose employees enter a permit space need not comply with subsections (d) through (f) and (h) through (k), provided that:
1. The employer can demonstrate that the only hazard posed by the permit space is an actual or potential hazardous atmosphere;
 2. The employer can demonstrate that **continuous forced air ventilation alone is sufficient to maintain that permit space safe for entry**;
 3. The **employer develops monitoring and inspection data that supports the demonstrations** required by subsections (c)(5)(A)1. and 2.;
 4. If an initial entry of the permit space is necessary to obtain the data required by subsection (c)(5)(A)3., the entry is performed in compliance with subsections (d) through (k);
 5. The determinations and supporting data required by subsections (c)(5)(A)1., 2. and 3. are documented by the employer and are made available to each employee who enters the permit space under the terms of subsection (c)(5) or to that employee's authorized representative; and
 6. Entry into the permit space under the terms of subsection (c)(5)(A) is performed in accordance with the requirements of subsection (c)(5)(B).

(B) The following requirements apply to entry into permit spaces that meet the conditions set forth in subsection (c)(5)(A).

1. Any conditions making it unsafe to remove an entrance cover shall be eliminated before the cover is removed.
2. When entrance covers are removed, the opening shall be promptly guarded by a railing, temporary cover, or other temporary barrier that will prevent an accidental fall through the opening and that will protect each employee working in the space from foreign objects entering the space.
3. Before an employee enters the space, the internal atmosphere shall be tested, with a calibrated direct-reading instrument, for the following conditions in the order given:
 - a. Oxygen content,
 - b. Flammable gases and vapors, and
 - c. Potential toxic air contaminants.
4. **There may be no hazardous atmosphere within the space whenever any employee is inside the space.**
5. **Continuous forced air ventilation shall be used,** as follows:
 - a. An employee may not enter the space until the forced air ventilation has eliminated any hazardous atmosphere;
 - b. The forced air ventilation shall be so directed as to ventilate the immediate areas where an employee is or will be present within the space and shall continue until all employees have left the space;
 - c. The air supply for the forced air ventilation shall be from a clean source and may not increase the hazards in the space.
6. **The atmosphere within the space shall be periodically tested** as necessary to ensure that the continuous forced air ventilation is preventing the accumulation of a hazardous atmosphere.
7. If a hazardous atmosphere is detected during entry:
 - a. **Each employee shall leave the space immediately;**
 - b. The space shall be evaluated to determine how the hazardous atmosphere developed; and
 - c. Measures shall be implemented to protect employees from the hazardous atmosphere before any subsequent entry takes place.
8. The employer shall verify that the space is safe for entry and that the pre-entry measures required by subsection (c)(5)(B) have been taken, through a written certification that contains the date, the location of the space, and the signature of the person providing the certification. The certification shall be made before entry and shall be made available to each employee entering the space or to that employee's authorized representative.
9. Any employee who enters the space, or that employee's authorized representative, shall be provided an opportunity to observe the pre-entry testing required by subsections (c)(5)(B)3. and 6.